



# St John the Baptist Primary School

Friday 2nd February 2024

## Diary Dates

### **6th February**

Safer internet day

### **9th February**

FOPS Bingo night 6pm

### **14th February**

Ash Wednesday service  
in church 9.10am

### **16th February**

Break up for half term

### **17th & 18th February**

Tree planting weekend (see  
page 5 for details)



Self-motivation Honest Imaginative Nurturing Empathy

Collective worship theme: Nurturing and the Good Samaritan

Hello Parents and Carers,



Another amazing week this week, we visited the church on Tuesday morning where the children were able to experience a baptism. Rev Bev baptised a teddy bear to teach us the rituals of Baptism and to help us understand about the importance of St John the Baptist. The children were wonderful role models to our wider community and asked a range of amazing questions. Did you know that when the holy water drains from the font, it flows to the ground below the church so that it stays on holy ground?!

A coffee morning for parents of children with SEND is being held at Halstead library on Friday 9th February at 9.30am. There is also an autism empowerment webinar which may be of interest to some parents in our community. Further information is available on page 7 of the newsletter.

**BINGO NIGHT!** On Friday 9th November FOPS are holding a Bingo Night at our school to raise money for all children in our school. It would be great to see as many of you there as possible and the invite is for everyone in the local community. Please spread the message far and wide. Further information is on page 6 of the newsletter.



A final reminder that if you do not order your meals by 9am on a Thursday that you will need to contact the school office. We run reports and order school dinners with set times and dates and you will have to provide a packed lunch if we have not communicated with Colne Engaine that your child requires a school dinner in time.

Club letters will be circulated next week ready for clubs after half term. Please sign your child up for clubs at the earliest point possible to ensure that they secure a spot.



We have two trips booked for next half term. Panthers are attending Duxford as part of their conflict and resolution topic and Owls are attending Colne Valley Railway to explore trains linked to their topic transport and travel. Payments need to be made via ParentPay before we confirm that the trips will be going ahead.

We have been informed of a tree planting weekend on the 17th & 18th February, please see page 5 for more details.

Next week is Children's Mental Health Week. Remember to look after yourselves and your family and take the weekend to relax and be with loved ones.

Have a lovely weekend, Miss Gage

United we strive for excellence-together we shine

# ATTENDANCE INFORMATION

Our schools attendance target is **96%**

	This Week	YTD
<b>Infants</b>	98%	96.19%
<b>Lower Juniors</b>	95.26%	95.12%
<b>Upper Juniors</b>	92.78%	95.21%
<b>Whole School</b>	95.82%	95.61%

If your child is off sick from school, please notify the school office no later than 9.20am—school policy states we need to be notified every day of absence. Please either email [admin@st-john.essex.sch.uk](mailto:admin@st-john.essex.sch.uk) or phone and leave a message if no answer.

**Please Note:** Trainers are not permitted. Black shoes for boys and girls only. Children can bring trainers into school to change into at breaktime if they wish to.

Long hair needs to be tied back safely, no jewellery to be worn in school apart from small stud earrings and a watch. No nail varnish.

Feel free to pack a healthy snack for your child to have a breaktime, crisps, sweets and fizzy drinks are not permitted.

## **Unexpected School Closures**

If we have to close school unexpectedly - information will be posted on the Home Page of the school website:

<https://www.st-john.essex.sch.uk/>

Alternatively, information can be found on the Essex School

**Closures page at:**

<https://www.essex.gov.uk/schools-and-learning/schools/emergency-school-closures>

**The decision to close the school is never taken lightly.**

**Please select your child's school meals as far in advance as you can—but no later than 9am on Thursday for the following week. Any orders placed after this time will not be processed .Thank you.**



## Gold awards 2<sup>nd</sup> February 2024

### Pebmarsh Cup – Otilie

Otilie, you have been unanimously chose by Owl Class this week to receive the cup. Owl Class say that you are kind, fun and hard working. They have talked about how well you are doing as a learner and how you are getting more confident. They see you as a good friend and someone they like being with. They also say that you are horse mad! Well done.

### Upper Juniors - Georgia

**You are a kind, caring and nurturing person and you genuinely care about everyone's feelings.** We are very lucky to have such an understanding and genuine young lady in our class and we know that everyone wants to be your friend. Never stop being lovely.

### Lower Juniors – Saffron

Saffron, Mr Chinnery and Mrs Bain often observe your nurturing and caring side towards your peers. You have a kind heart that naturally wants to help and support others and this **will take you far in life. “In a world where you can be anything, be kind”.** Continue being that kind and nurturing friend that you are.

### Infants – Frida

Frida, you have been a superstar this week. You have cared for and nurtured yourself as an independent learner and it is amazing to watch and be a part of. We are all very proud of you.

Highest attendance award goes to Infants this week!

If you intend to take your child out of school for any reason other than illness or medical appointments, please complete a leave of absence form. These are available from the school office .



CMXSC.CO.UK | WITHAM ACTIVE CAMPS TUESDAY 20TH - THURSDAY 22ND FEB 24

# JOIN OUR TEAM EVERY SCHOOL HOLIDAY FOR OUR ACTIVE CAMPS!

OFFERING YOUR CHILD A SAFE SPACE TO LEARN, SOCIALISE, STAY ACTIVE, FORM FRIENDSHIPS, DEVELOP INTERESTS AND BUILD CONFIDENCE.

Come and join our team every school holiday for lots of fun, sports and much more! PLUS exciting new activities & theme days we cant wait to share with you.

Book now by visiting  
[WWW.CMXSC.CO.UK](http://WWW.CMXSC.CO.UK)



@cmxscactive

Childcare  
**Choices**

Ofsted  
Registered

## Everything you need to know!



Venue - Maltings Academy Spinks Lane, Witham CM8 1EP



Time 9.00am - 3.30pm  
Early Drop Off 8.30am - Late Pick Up 4.30pm



Age - For all school aged children from Year R - Year 7



Sports - Football, Basketball, Tag Rugby, Gymnastics, Cricket  
PLUS much more



Price - Normal Day £25  
Early Drop Off £3 - Late Pick Up £5

TREE PLANTING WEEKEND—17TH & 18TH FEBRUARY 10AM-3PM

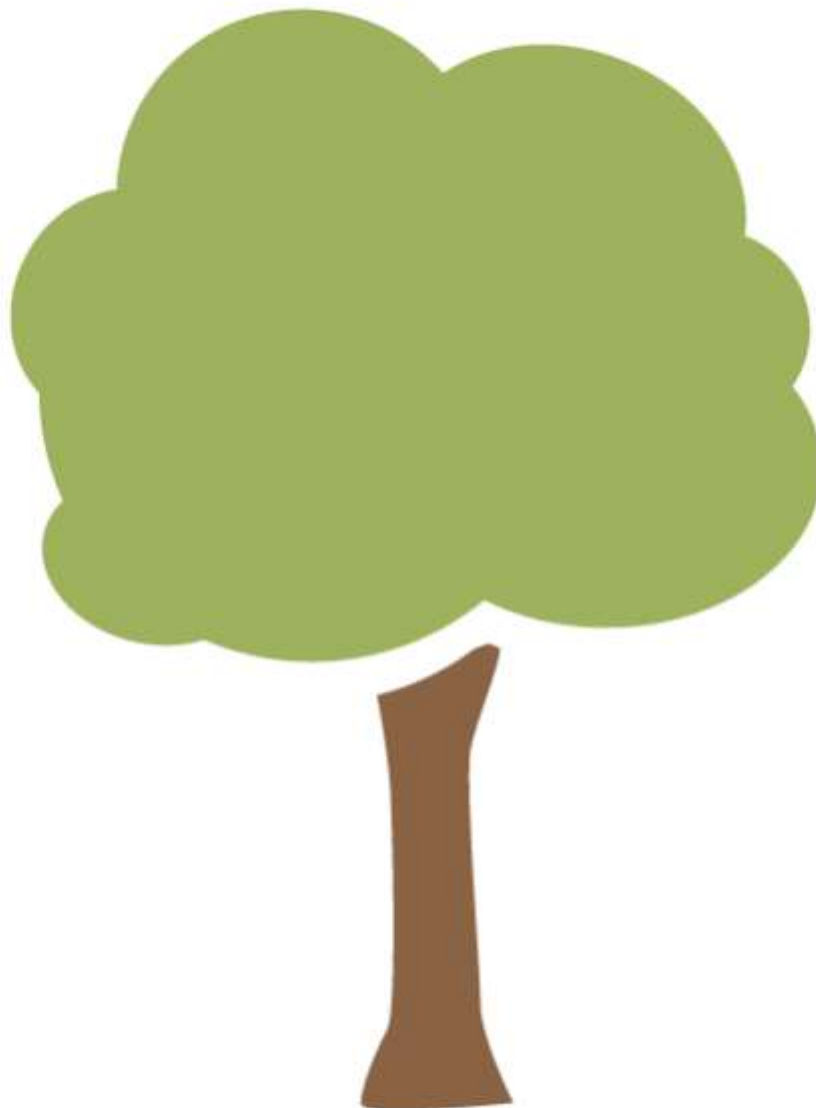
PLEASE SEE BELOW FOR DETAILS

Twinstead Hall Wood – off Lorkins Lane – access track into wood – [backers.tailwind.october](https://backers.tailwind.october) – what 3 words

Park in wood yard – follow direction arrows to planting site.

Bring spade – wear sensible foot wear – muddy.

A chance to help restore an Ancient Semi Natural Woodland.





# FOPS FAMILY FUN

## BINGO NIGHT

Friday 9<sup>th</sup> February 2024

6pm – 8pm

Adults £7

(includes 6 books for 8 games)

Children £1

(includes 1 book for 8 games)

Prizes

(Line & Full House)

Tuck Shop

(crisps - sweets - soft drinks)

Spaces are limited  
so buy your tickets ASAP!  
(Books will be issued on the night)

PLEASE PARK IN VILLAGE HALL CAR PARK



This is a fundraising bingo evening  
and all profits raised by FOPS will be used by  
St John the Baptist CEVA Primary School



# Do you have a child with S.E.N.D.?

Join us for a coffee morning at  
Halstead Library  
Friday 9<sup>th</sup> February  
9.30am

meet other parents  
talk to a SenCo  
Family Forum  
S.E.N.D. Inclusion partner





## **Autism Empowerment Webinar**

This one-hour lunchtime webinar is a brief exploration of how Autism can present, the history of Autism, diagnosis as well as differences in communication and social interaction. We will also be looking at how the environment can impact on someone with sensory processing challenges.

The main aim of this webinar is to focus on the many strengths autistic individuals have and how we can increase understanding and Neuro-inclusivity through education and raising awareness.

**Webinars are held on Zoom on the following dates:**

**Thursday 29<sup>th</sup> February 12:30 to 13:30**

**Friday 29<sup>th</sup> March 12:30 to 13:30**

**Friday 26<sup>th</sup> April 12:30 to 13:30**

At the end of the webinar, you will receive a certificate of attendance that will be emailed to your given email address.

**The cost of this one-hour webinar is only £5.50!**

To book you place on the webinar please either scan the QR code below or go to: [www.theautismtrainingnetwork.com/training](http://www.theautismtrainingnetwork.com/training)

"For every person who understands Autism better, another Autistic person will be happier."-

Libby Scott, Autistic Author (at age 11)





# St John the Baptist Primary School

## Spring Term January-March 2024

### Parent calendar

Date	Yr Group	Event
4 <sup>th</sup> January	Whole school	Back to school
5 <sup>th</sup> January	Whole School	St John's got Talent
8 <sup>th</sup> January	Lower Juniors	Forest school
8 <sup>th</sup> January	Whole School	Clubs start
15 <sup>th</sup> January		Applications for primary school places September 2024 closing date
15 <sup>th</sup> January	Infants	Forest school
18 <sup>th</sup> January	Whole School	National Thesaurus Day- Come dressed as a word!
19 <sup>th</sup> January	Parents	FOPS meeting- come and we what we are all about
19 <sup>th</sup> January	KS2	A lesson in Spanish guitar and Violin
22 <sup>nd</sup> January	Upper Juniors	Forest school
22 <sup>nd</sup> January	Whole School	Energy saving week
29 <sup>th</sup> January	Infants	Forest school
5 <sup>th</sup> February	Lower Juniors	Forest school
6 <sup>th</sup> February	Whole school	Safer internet day
9 <sup>th</sup> February	All welcome	FOPS bingo night 6pm-8pm
12 <sup>th</sup> February	Infants	Forest school
14 <sup>th</sup> February	Whole school	Ash Wednesday service in church 9.10am— all welcome
<b>16<sup>th</sup> February</b>	<b>Whole school</b>	<b>Break up for half term</b>
<b>26<sup>th</sup> February</b>	<b>Whole school</b>	<b>Return to school</b>
26 <sup>th</sup> February	Upper Juniors	Forest school
4 <sup>th</sup> March	Infants	Forest school
7 <sup>th</sup> March	Whole school	World book day
11 <sup>th</sup> March	Whole school	Parents' evening consultations
11 <sup>th</sup> March	Lower Juniors	Forest school
12 <sup>th</sup> March	Lower Juniors	Learning together-Science week
14 <sup>th</sup> March	Infants	Learning together-Science week
15 <sup>th</sup> March	Upper Juniors	Learning together-Science week
13 <sup>th</sup> March	Whole school	Parents' evening consultations
18 <sup>th</sup> March	Infants	Forest school
25 <sup>th</sup> March	Upper Juniors	Forest school
28 <sup>th</sup> March	Whole school	Easter service in church 9.10am — all welcome
28 <sup>th</sup> March	Whole school	Break up for Easter